

Marley Rainwater Training



Rainwater Solutions

 **MARLEY**[®]

Objective

This Training Module will provide the trainee with a basic understanding of Marley's Rainwater systems

Product range

Rainwater Solutions



Rainwater

The Rainwater category consists of spouting, downpipes and accessories.

There are 5 styles: Stormcloud[®], Classic[™], FL2[®], Typhoon[®], and Magnum[®].

There are 5 styles of downpipe: RP65[®] 65mm round, RP80[®] 80mm round, 65x50mm rectangular, 100x50mm rectangular and Magnum[®] 100mm downpipes.

The Marley Stratus Design Series[®] is a premium range of coloured spouting and downpipe systems. Available in Typhoon and Stormcloud spouting systems and the RP80 80mm round downpipe system. Five colours including Black, Ironsand[®], Grey Friars[®] and two metallics, Copper and Titanium.

There is a range of accessories including diverters, spreaders, caps, clips and bends.

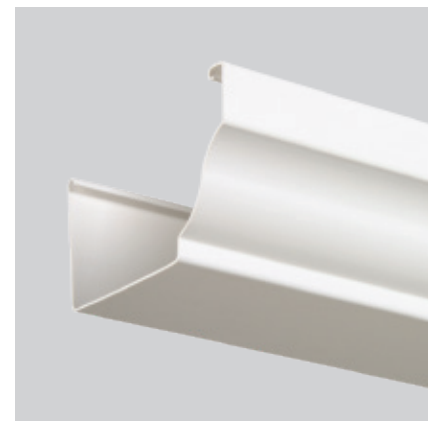
Stormcloud®

- **Material:** uPVC
- **Colour:** White, Ironsand®, Grey Friars®, Black
- **Cross Sectional Area:** 5100 mm²
- **Brackets:** Internal
- **Profile:** Quarter round/quad
- **Key selling point:** NZ's most popular style



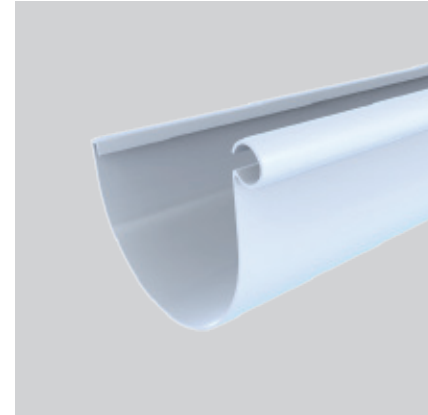
Classic™

- **Material:** uPVC
- **Colour:** White
- **Cross Sectional Area:** 6700 mm²
- **Brackets:** Internal
- **Profile:** Based on an original Roman design
- **Key selling point:** Large capacity and strong angular style



Typhoon®

- **Material:** uPVC
- **Colour:** White, Black, Ironsand®, Grey Friars®, Copper, Titanium
- **Cross Sectional Area:** 6100 mm²
- **Brackets:** Internal & External
- **Profile:** Contemporary half round design
- **Key selling point:** Great flow and colour options



FL2®

- **Material:** uPVC
- **Colour:** White
- **Cross Sectional Area:** 4800 mm²
- **Brackets:** Internal & External
- **Profile:** Rounded box section
- **Market:** Residential
- **Key selling point:** High face & ultra clean lines



Magnum[®]

- **Material:** uPVC
- **Colour:** Grey
- **Cross Sectional Area:** 14 300 mm²
- **Brackets:** External only
- **Profile:** Large half round design
- **Key selling point:** Excellent capacity and strength



Marley Stratus Design Series®

- **Material:** Co-extruded uPVC Internally and an Acrylic Polymer or PVC Externally
- **Colour:** Black, Ironsand®, Grey Friars®, Copper and Titanium
- **Profiles:** Typhoon®, Stormcloud®, RP80®



Marley co-extrusion manufacturing process

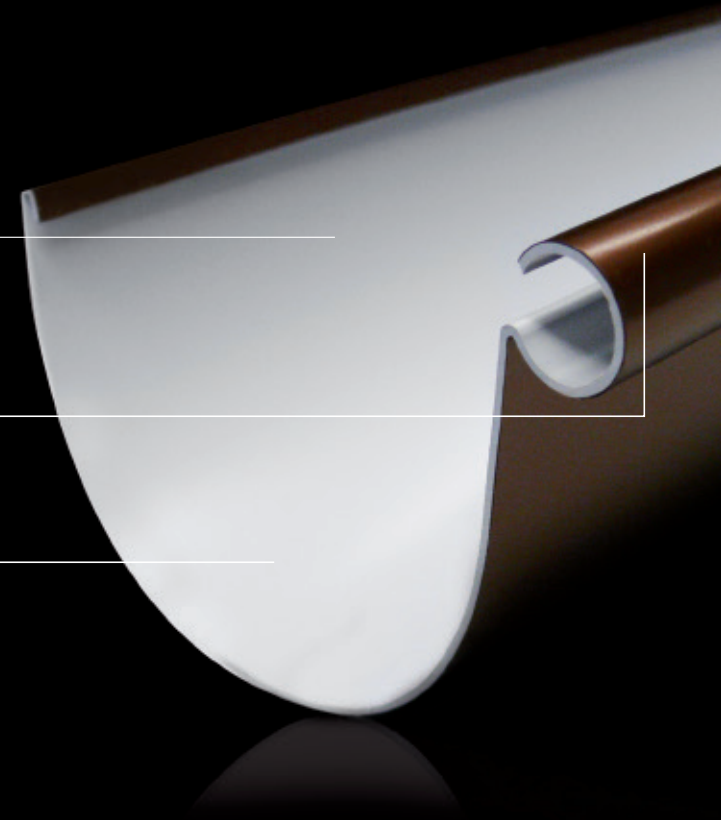
The co-extrusion process forms and bonds simultaneously two layers of material with selected performance characteristics.

The outer layer provides durable colour with high UV and weather resistance. The grey internal uPVC layer provides strength and minimises thermal expansion by reducing excessive heat build-up in the profile.

Grey internal uPVC layer minimises thermal expansion by reducing excessive heat build-up in the profile

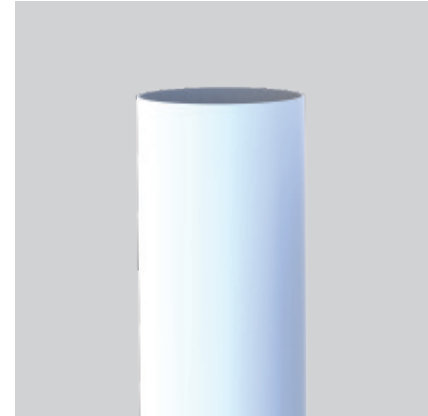
The coloured outer layer is an advanced engineered polymer which provides durable colour with high UV and weather resistance

Co-extrusion technology combines layers for enhanced aesthetics and performance of trusted Marley uPVC spouting & downpipe systems



Downpipes

- RP80[®] 80mm round downpipe system (RP80)
- RP65[®] 65mm round downpipe system (RP65)
- Magnum[®] 100mm round downpipe system (RP100.GY.4)
- Rectangular 65mm x 50mm (MC16)
- Rectangular 100mm x 50mm (MC140)



Spouting and Downpipe System Components

- Stop Ends (L/H and R/H)
- Expansion Outlets
- Spouting Joiners / Expansion Joiners
- Brackets
- External and Internal Corners / Special Angles
- Nails/Stainless Steel Screws
- Marley Solvent Cement (MCS)



Rainwater Accessories

CURVE™

Drawing water in, keeping leaves out

- Filters leaves and debris for cleaner water
- Cleaner water into tank improves water quality and reduces maintenance
- Can retain over 99% of water with a clean screen*
- Reduces chance of drains blocking
- Quick release upper body for easy maintenance
- Streamlined design with unique screen
- Also available: Leaf Catcher, Leaf Beater, Leaf Eater



*See Marley.co.nz for details

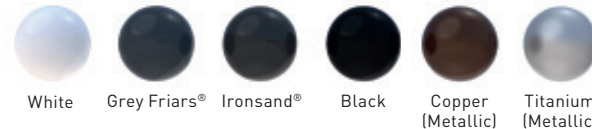
TWIST®

Water when you need it

- Direct connects to a small collection tank using any standard garden hose fitting
- Provides access to free rainwater from downpipes
- Can fill a 300 litre tank in an hour*
- Great source of water for the garden, to top up the pool, or for emergency supply
- Positive impact on the environment through reduced mains water usage



Curve™ & Twist® are available in a range of colours



Rainwater Accessories

- **Outlet Strainer®**
Prevents large debris such as sticks and balls from entering the downpipe
- **Downpipe Diverter**
Diverts debris from the tank or stormwater system while cleaning
- **Tank Accessories**
Improve the quality of water you are collecting for drinking or other purposes. Includes First Flush Diverters, Calmed Inlets, Floating Outtakes etc

Outlet Strainer Downpipe Diverter



First Flush Diverters



Basic Installation Notes

- **Bracket Spacing:** Space brackets a maximum of 500mm apart. Bracket spacing should be reduced to 300mm in very high wind zones or in snow prone areas.
- **Expansion:** When a run of spouting exceeds 10 metres an expansion allowance is required to accommodate thermal movement. Expansion can be allowed for by either installing a downpipe expansion outlet or an expansion joiner.
- **Solvent Cement:** All Marley Spouting System components should be joined using Marley Solvent Cement (MCS), with the exception of the Expansion Outlets, which should be left free to expand and contract.

What are the features and benefits?

- **Will Not Rust:** Excellent for New Zealand's predominantly coastal conditions – durable product
- **Low-Maintenance:** No regular washing required
- **Colour options:** White, Black, Ironsand®, Grey Friars®, Copper and Titanium (colours in selected profiles only)
- **Easy Installation:** Low expertise, DIY
- **Full System:** Downpipes and accessories
- **15 Year Guarantee:** A guarantee backed up by a large company that you can trust.

What are the features and benefits?

- **Good water collection:** Certified for use with potable water (drinking water)
- **100% Recyclable:** Made from uPVC (unplasticised PVC) and is recycled on site at Marley
- **New Zealand Made:** Manufactured locally in New Zealand by a trusted manufacturer for New Zealand conditions
- **Marley brand:** 50 plus years in business with a proven history in uPVC Spouting
- **Technical support:** Marley has its own testing laboratory to carry out quality control tests

Colour Durability

Marley has spent 15 years researching and perfecting a superior co-extrusion technology to create a hard wearing, UV resistant surface designed to protect against New Zealand's unique UV rays and climate.

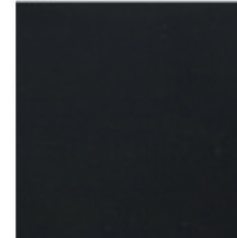
TITANIUM
NEW



TEN YEARS LATER



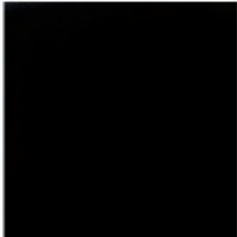
GREY FRIARS
NEW



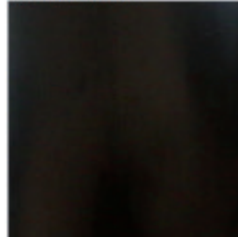
TEN YEARS LATER



BLACK
NEW



TEN YEARS LATER



COPPER
NEW



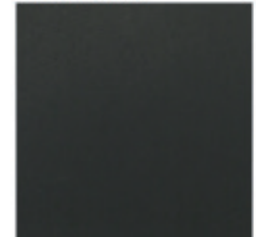
TEN YEARS LATER



IRONSAND
NEW



TEN YEARS LATER



Colour Durability

This metal spouting was replaced in Mt Maunganui in May 2017

Its less than 10 years old.



Standards

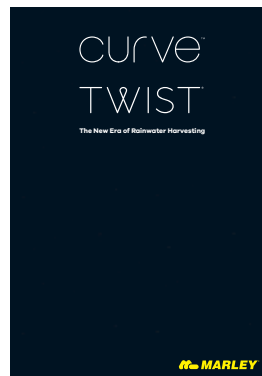
The Building Code

- B2. Marley Rainwater systems are manufactured from materials that will not rust or corrode to give a minimum service life of 10 years
- Marley downpipe is manufactured to AS/NZS2179
- Potable Water certification to AS/NZS4020

Warranty

- 15 year guarantee if installed correctly
- UV Stabilised
- Will not rot, corrode or rust
- 100% recyclable

Reference Material (available from Marley.co.nz)



Quick test 10–15

- Name the Marley rainwater profiles
- What colours are available in the Marley Stratus Design Series®?
- What is the recommended spacing for brackets? In high winds?
- Is uPVC recyclable?

Marley Contact Details

Phone 0800 627 539

Visit www.marley.co.nz

National Account Manager Building. **James Patterson**