

MARLEY CAMLOCKS

TRAINING PRESENTATION

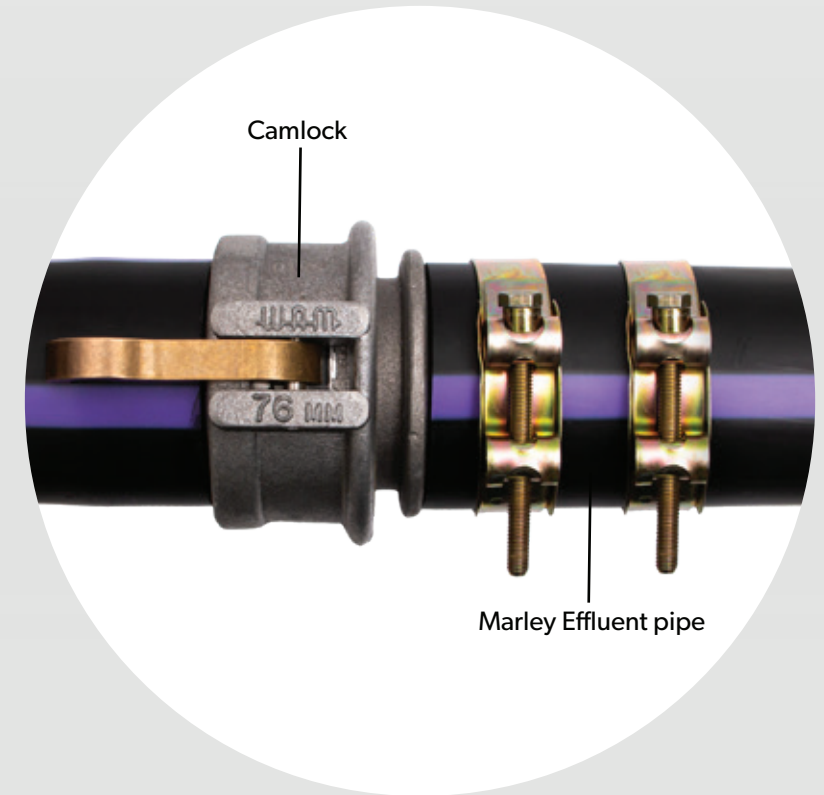


WHAT IS A CAMLOCK?

Fast, reliable aluminium fittings for connecting Marley Effluent pipe and Draghose that also allow for easy release and re-connection if a pipe system design is altered.

USE WITH WHAT PRODUCTS?

Designed for use with Marley Effluent pipe and Marley Draghose 57mm to 90mm (based on outside dimensions).



WHY USE MARLEY CAMLOCKS?



Quick and easy maintenance

Clip-on/clip-off mechanism allows fast and simple pipe connections



Greater grip

Long spigot allows for extra pipe clamps (where necessary)



Sure to seal

Gaskets are captured within a recess to ensure proper placement of seal



Precision machined tolerances

These fittings have been precision machined to rigid tolerances ensuring a tight fit every time



Range of types and sizes (57mm to 90mm)

Extensive range of fittings to suit most applications



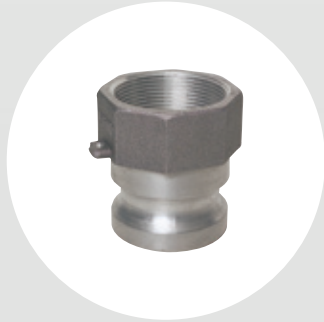
Aluminium alloy

Excellent strength and durability but still lightweight.



TYPES OF CAMLOCKS

TYPE A



Male adapter to female BSP

CAM57A

CAM63A

CAM75A

CAM90A

Reducers

CAM75.50A

CAM90.50A

TYPE C



Female coupler hose tail

CAM57C

CAM63C

CAM75C

CAM90C

TYPE E



Male adapter to hose tail

CAM57E

CAM63E

CAM75E

CAM90E

Reducers

CAM75.57E

CAM75.63E

CAM90.57E

CAM90.63E

CAM90.75E

TYPE F



Male adapter to male BSP

CAM63F

CAM75F

CAM90F

Reducers

CAM75.50F

CAM90.50F

TYPE DHT



Double hose tail

CAM57DHT

CAM63DHT

CAM75DHT

CAM90DHT

TYPE T



**Hose tail to
male BSP**

CAM75T

CAM90T

Reducers

CAM75.50T

CAM90.50T

TYPE P



Male stop plug

CAM63P

CAM75P

TYPE HC



Hose clamps

CAM57HC

CAM63HC

CAM75HC

CAM90HC

INSTALLATION INSTRUCTIONS

1

To make a cam connection, first ensure lever arms are in open position. Simply slide the adaptor into the coupler until it bottoms out. Then with normal hand pressure press the Camlock levers down.



2

Disassembly is as quick as assembly. Just lift the arms and remove the adaptor.



3

To make a pipe connection insert the pipe over the fitting until the end of the pipe butts up against the body of the fitting. This may require preheating the pipe and using a hammer and block of wood to get the pipe fully on to the fitting.



4

One or two pipe clamps should be used to complete the joint.



5

To make a threaded connection on all threaded fittings, please use thread tape.



INSTALLATION NOTES

1

Marley Camlocks are designed to work together and in conjunction with Marley Effluent and Draghose. Other Camlocks / pipe may be compatible but would not be covered by Marley standard terms and conditions.

2

Please note that couplings should not be disconnected under pressure or with liquid in the line.

3

Camlocks are not designed for use with compressed air, gases or steam.

4

BSP Thread stands for “British Standard Pipe” Thread which is the Thread used in the majority of New Zealand water fittings



MAR3842 August 2019

 **MARLEY[®]**