

Spouting & Downpipe

DIY Installation Guide



DIY
made easy!

Let's get started...

Marley has been making spouting and downpipes for kiwis for over 50 years. Proudly made in New Zealand, Marley spouting and downpipe systems offer clean lines and a smart finish that will enhance the look of your home and protect it against nature's elements.

Step 1: Select PAGE

Spouting profiles.....	1
Downpipe profiles	1

Step 2: Plan

Plan your installation	2
------------------------------	---

Step 3: Prepare

What you will need	4
--------------------------	---

Step 4: Install

Install your spouting	5
Install your downpipe	7

Maintenance & Repairs

Maintenance	8
Repair damaged spouting	8
Fix spouting creep.....	8

Hi I'm Jack.
You may remember me from the Marley TV commercials in the late 80's-early 90's. I'll be your DIY guide providing helpful tips throughout this installation guide.



- 15 YEAR GUARANTEE
- WILL NOT RUST
- U.V RESISTANT
- MADE IN NZ
- SAFE FOR DRINKING
- LOW MAINTENANCE
- 100% RECYCLABLE

Which style is right for me?

Stratus Design Series®

Coloured spouting and downpipe options are available. Scan the QR code for profiles and colours.



Marley offers a wide range of spouting and downpipe profiles to suit a variety of house styles and rainfall levels. Choose from our most popular residential profiles below.

Spouting Profiles



Classic™

The original Roman profile, suits villas and colonial houses.

Brackets: Internal



FL2®

Clean design with high front to hide untidy roof edges.

Brackets: Internal or External



Stormcloud®

Versatile 1/4 round shape synonymous with Marley.

Brackets: Internal

NB: Flexipak only available for Stormcloud in Ironsand®, Grey Friars® and Black.



Typhoon®

Contemporary half round design with large water capacity.

Brackets: Internal or External

Downpipe Profiles



RP65®

65MM ROUND
DOWNPIPE



RP80®

80MM ROUND
DOWNPIPE



65 x 50mm
RECTANGULAR
DOWNPIPE



100 x 50mm
RECTANGULAR
DOWNPIPE

Marley's range of uPVC downpipe systems can also be installed with metal spouting systems. Marley does not recommend installing its range of downpipes in wall cavities or in buried applications. Only Marley's round downpipe systems are to be used when installing a charged Rainwater collection system. Note gloss levels may vary between building materials. Actual colours may vary slightly from those shown.

For more detailed information relating to spouting and downpipe capacities refer to technical sections on each product page at marley.co.nz

When selecting a colour add the corresponding colour extension to the product code.

e.g. MT1.4.GYF = Typhoon 4m length in Grey Friars®

Colour code extension

For a full list of colours and colour code extensions please scan.



Spouting

Component	Classic™	FL2®	Stormcloud®	Typhoon®
1 Spouting 3m length (White Only)	MC1.3	FL1.3	MS1.3	MT1.3
1 Spouting 4m length (Colours Only)	-	-	MS1.4__	MT1.4__
1 Spouting 5m length (White Only)	MC1.5	FL1.5	MS1.5	MT1.5
2 External bracket	-	FL2E	-	MT2E__
3 Internal bracket	MC2	FL2I	MS2__	MT2I__
4 Spouting Stopend (LH)	MC3	FL3	MS3__	MT3__
5 Spouting Stopend (RH)	MC4	FL4	MS4__	MT4__
6 Spouting joiner	MC5	FL5	MS5__	MT5__
7 Expansion joiner	MC17	FL17	MS17__	MT17__
8 External corner 90°	MC6	FL6	MS6__	MT6__
9 Internal corner 90°	MC7	FL7	MS7__	MT7__
10 Expansion outlet 65mm	MC8.65	FL8.65	MS8.65__	-
10 Expansion outlet 80mm	MC8.80	FL8.80	MS8.80__	MT8.80__
11 Dropper outlet 65mm (only short runs)	MC11.65	MC11.65	MC11.65	-
11 Dropper outlet 80mm (only short runs)	MC11.80	MC11.80	MC11.80	MT11.80__
12 Outlet Strainer	RWST	RWST	RWST	RWST
13 Marley MCS® Solvent Cement (180g tube)	MCS	MCS	MCS__	MCS__

Downpipe

Component	RP80® 80mm Round	RP65® 65mm Round	Rectangular 100 x 50mm	Rectangular 65 x 50mm
13 Marley MCS® Solvent Cement (180g tube)	MCS__	MCS	MCS	MCS
14 Downpipe	RP80__ (colours not socketed)	RC65	MC140 (not socketed)	MC16 (not socketed)
15 Downpipe joiner	RS80__	RS65	MC149	MC14
16 Saddle pipe clip	RC80__	RC65	MC144	MC22
17 Adjustable pipe clip	RC80.2__	RC65.2	MC144S (Stand off)	MC22S (Stand off)
18 Adjustable pipe clip spacer	RC80.2S__	RC80.2S	-	-
19 F+F bend - 95°	RB2.80__	RB2.65	MC142	MC13
20 M+F bend - 95°	RB4.80__	-	-	-
21 F+F bend - 43°	RB3.80__	RB3.65	MC145 (45°)	MC12 (112°)
22 M+F bend - 43°	RB5.80__	-	-	-
23 Junction - 95°	RJ80__	RJ65	MC148T	MC20 (112°)
24 Adaptor - 65mm	-	-	-	MC19.65
24 Adaptor - 80mm	RAS80 (AHI 80mm) White Only	RA65.80	MC141.80	MC19.80
24 Adaptor - 90mm	RA80.90__	RA65.90	MC141.90	-
24 Adaptor - 100mm	RA80.100__	-	-	-
25 Spreader kit	SKIT80__	-	-	-
26 End Cap	CS80__	-	-	-
27 Curve® Leaf Diverter	CURVE__	-	-	-
28 Twist® Rainwater Diverter	TWIST__	-	-	-

What will I need?

Tools

- ✓ String line/chalk line
- ✓ Drill and drill bit for screws
- ✓ Builders level
- ✓ Measuring tape
- ✓ Hacksaw – fine tooth PVC saw
- ✓ Hammer
- ✓ Ladder/trestle/planks
NB: Refer to Worksafe NZ website for best practice guidelines for working at height in New Zealand
- ✓ Pencil

Safety precautions

- Keep tools and materials away from children
- Read the instructions before beginning your project
- You may need to seek permission from your local council and/or water and power authorities before beginning the project
- When connecting downpipes to stormwater pipes, Marley recommend you consult a certified tradesperson before beginning the project
- Always work from a stable platform and only use ladders for access or to carry out low-risk minor or routine work.

NB: Refer to Worksafe NZ website for best practice guidelines for working at height in New Zealand



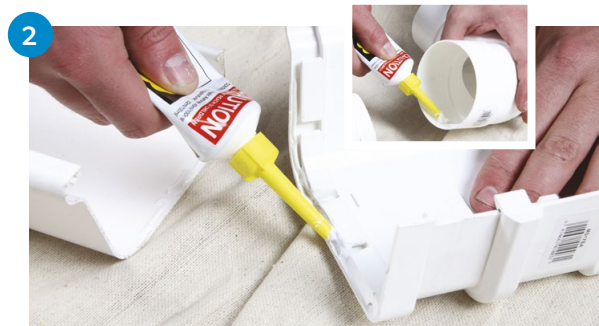
Here's a quick lesson on how to use solvent cement

Solvent cement your fittings

Marley MCS® solvent cement is specifically formulated to bond together the components of Marley spouting and downpipe systems and helps to ensure a long-lasting, water tight joint is achieved. Only use Marley solvent cement (MCS®) when installing Marley spouting and downpipe.



Surface areas to be joined must be clean, dry and free from burrs.



Marley solvent cement (MCS®) should be applied evenly to **both surfaces** being joined. Then press both surfaces together and hold for 20–30 seconds.



Any surplus solvent cement should be removed immediately with a damp, clean, lint free cloth. Leave sitting for 10 minutes.

How do I install my spouting?

Marley spouting and downpipes are intuitively designed as a modular system, making repair and replacement much simpler. There is a technical element to installing Marley spouting. If you are unsure, Marley recommends you seek advice from a trade professional.



1 Gather

Your tools and materials.



2 Set up

Assemble your scaffold and drop cloth around your work area and ensure appropriate safety equipment is at hand. Check the roof overhang beyond fascia is no less than 50mm.



3 Low points

Locate position of downpipe outlet, this will be your low point. On existing houses these are identified by existing downpipes or stormwater outlets.



4 String line/Chalk line

Next find your high point. Position the first bracket at determined high point as high as possible on the fascia under roof overhang. Secure string line to fascia using a screw adjacent to the first bracket and run under first bracket to the low point (see Fig 1). **Ensure a min fall of 5mm for every 10m of run.**



5 Brackets

Mark and secure brackets no more than 500mm apart. In high wind or snow prone areas reduce spacing to 300mm.

Use a minimum of 3 nails or 3 stainless steel screws per bracket. Minimum screw is 6g x 20mm coarse thread.

NB: Gib clouts or roofing screws must NOT be used.



6 Expansion Outlet (low point)

Position outlet at low point (in line with drain) and ensure string line aligns with feature on side tabs of outlet.

Secure outlet to fascia using a minimum of 4 fixings.

My Top Tips

- ✓ Add a Marley Curve to each downpipe to improve tank water quality or prevent drain blockages.
- ✓ Add a Marley Twist to one downpipe to capture free rainwater for watering, cleaning or emergency.
- ✓ Remember to double-check your lengths - measure twice, cut once.
- ✓ Work towards your low point (where drain is located) with a minimum fall of 5mm for every 10m.
- ✓ If you're going to paint spouting it's easier to paint on the ground before you install. See page 9 for paint recommendations.
- ✓ When replacing existing spouting, take the opportunity to check the condition of your fascia and sand/repaint as necessary.



7



Spouting

For internal brackets, position front of spouting into front of brackets, then roll spouting into back of brackets until secure.

For external brackets, position back of spouting into back of bracket, then roll spouting into front of brackets until secure.

Check every bracket is correctly engaged.

8



Expansion Allowance

Slide spouting into expansion outlet. Ensure end of spouting is aligned with the marking corresponding to the temperature at time of installation.

NB. Do not solvent weld spouting into expansion outlet.

9



Joins

Use spouting joiners and Marley MCS® solvent cement to connect lengths of spouting as necessary. For long runs over 12 metres or runs without an expansion outlet, replace one of the spouting joiners with an expansion joiner to provide further expansion allowance.

10



Corners

When required, solvent weld corners onto correct end of the spouting.

NB. Corners should be supported by brackets either side – 50mm clearance for external corners and 200mm clearance for internal corners.

11



Check

Check project is safe and complete. Clean any excess Marley solvent cement (MCS®) from corners or joiners to minimise potential pooling of water. Ensure spouting is correctly secured to each bracket and space has been provided for expansion and contraction.

Note:

Marley spouting systems are not designed for use as an internal spouting system.

How do I install my downpipe?

Marley downpipe systems efficiently transfer rainwater from spouting to stormwater systems with a modular range of pipe and fittings to suit any situation.



Install expansion outlet as per spouting installation instructions.



Connect downpipe bend to expansion outlet using a screw to hold bend in place. To allow easy removal for cleaning debris do not solvent cement bend to outlet.



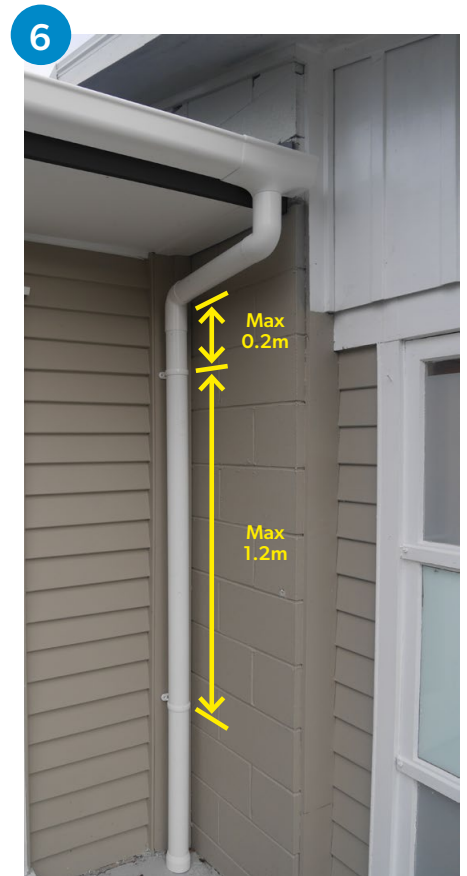
Determine the offset length (A) using Fig 2 allowing for depth of socket and taking into consideration the downpipe bracket distance from the wall (B). Cut downpipe as per measurements.



Solvent cement all remaining elbows to downpipe on ground, before completing offset installation.



Use a level or plumb line to mark where the downpipe will sit against the wall. Ensure downpipe clips are spaced no more than 1.2 metres apart and the first clip is a maximum of 200mm below the downpipe bend. Downpipe clips to be secured with two stainless steel screws.



Connect downpipe to access pit, surface drainage or stormwater outlet (as shown in photo).

NB. Do not connect downpipe to waste water gully trap.

Check project is complete and all joints are clean.



Note

Marley downpipe systems are not designed for a concealed system, for use in wall or ceiling cavities or buried applications. Stormwater/DWV pipe should be used for these applications.

Maintenance



1 Clear debris

Regularly check and clear debris from the inside of your spouting and/or downpipes. If leaves are a regular problem, consider Marley Curve leaf diverters to self-shed leaves from your downpipes.

2 Check brackets

Check brackets are intact, spaced max 500mm apart and spouting has **even fall towards** outlet to avoid water ponding. (Min 5mm per 10m)

3 Check expansion joiner

Unclip expansion joiner, clean the rubber seal of any dirt or grit and re-lubricate with a silicone based lubricant before reassembly.

4 Clean once per year

Wash your Marley spouting and downpipe system annually using warm soapy water and a soft bristled brush or cloth. Rinse with clean water.

5 Painting

Clean spouting or downpipes and allow to dry. Apply one coat of acrylic undercoat and two coats of top coat.

NB. Do not paint with dark colours or paint the inside of the spouting. This can result in excessive thermal movement and potentially cause leaks.

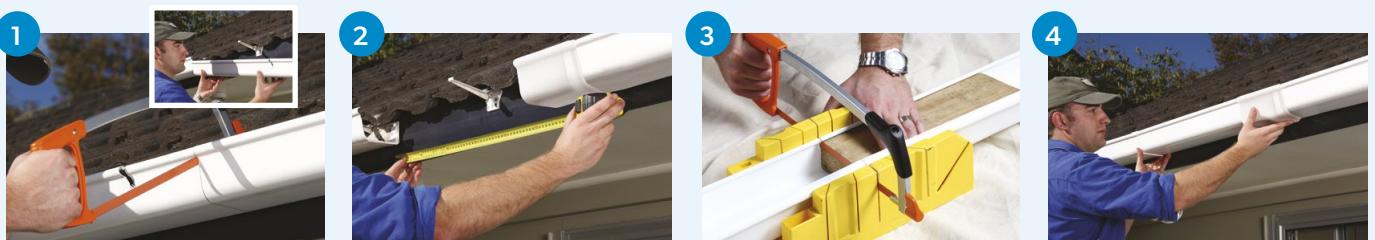
Repairs

Stratus Design Series®

Coloured spouting and downpipe options are available. Scan the QR code for profiles and colours.



Repair damaged spouting



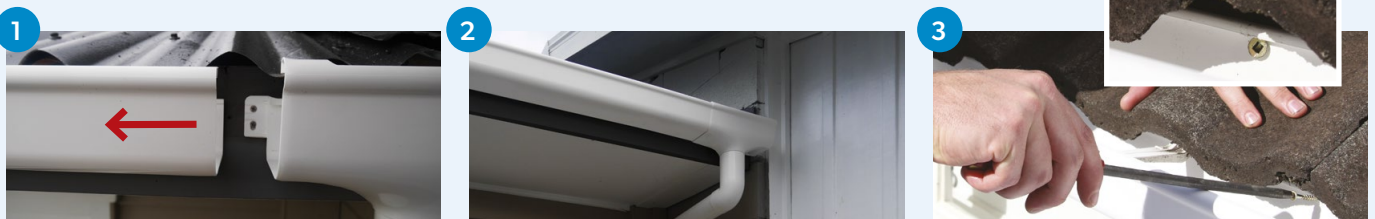
Block spouting with cloth to create dry working area. Mark and cut 50mm inside bracket either side of damaged area.

Replace any damaged brackets. Place joiner and expansion joiner then measure distance in between for replacement piece.

Cut replacement section on ground and solvent cement a joiner and expansion joiner to each end.

Roll the end with the expansion joiner into place by first engaging the back lip and then clicking front lip into position. Then solvent cement the joiner at the other end.

Fixing spouting creep



Spouting creep is when expansion and contraction does not occur in a conventional manner and may result in spouting pulling out of the expansion outlet or pushing into outlet and causing blockages.

Re-insert spouting into expansion outlet. Ensure end of spouting aligns with temperature marking on inside face of outlet.

Secure spouting to fascia using a screw at the point furthest from the expansion outlet in the same run. This will control movement to and from the expansion outlet.

Urban Rain Harvesting Made Easy

Marley's Tank-It® urban tank, coupled with a Marley Twist® downpipe diverter, offer a simple rain harvesting solution for capturing free rainwater from your roof.



Great for gardeners



Fill the pool or pond



Vegetable gardens



Summertime lawn envy



Back up supply

Sustainable Manufacturing

Marley is committed to creating environmentally sustainable processes and products and was the first plastics manufacturer in New Zealand to achieve ISO14001 registration. We are also Best Environmental Practice certified for our entire range of manufactured uPVC systems. This means we get our raw materials from sustainable and responsible sources, continuously work on our manufacturing processes to reduce our environmental footprint and accept our products back at the end of their useful life for recycling.

BEST ENVIRONMENTAL PRACTICE



AS/NZS 5385:2024
LICENSE No 2969



Disclaimer

This sales brochure has been compiled by Marley New Zealand Limited ("The Company") and is supplied subject to acknowledgment of the following conditions:

The sales brochure is protected by Copyright and may not be copied or reproduced in any form or by any means in whole or in part without prior consent in writing by the Company. Prices are subject to change, product specifications, usage data and advisory information may also change from time to time with advances in research and field experience. The Company reserves the right to make such changes to price or product information at any time without notice. Correct usage of the Company's products involve engineering judgements which cannot be properly made without full knowledge of all the conditions pertaining to each specific installation. The Company expressly disclaims all and any liability to any person whether supplied with this publication or not in respect of anything and of the consequences of anything done or omitted to be done by any such person in reliance whether whole or partial upon the whole or any part of the contents of this publication. No offer to trade, nor any conditions of trading, are expressed or implied by the issue or content of this manual. Nothing herein shall override the Company's Conditions of Sale, which may be obtained from the Registered Office or any Sales Office of the Company. This price book is and shall remain the property of the Company, and shall be surrendered on demand to the Company.

Our Partners



For more information: 0800 MARLEY (0800 627539) | www.marley.co.nz