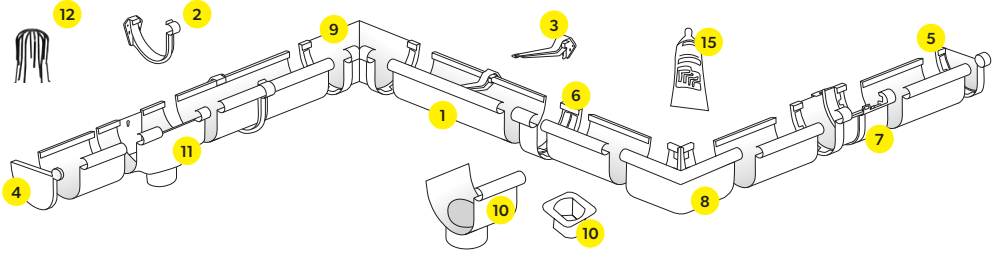
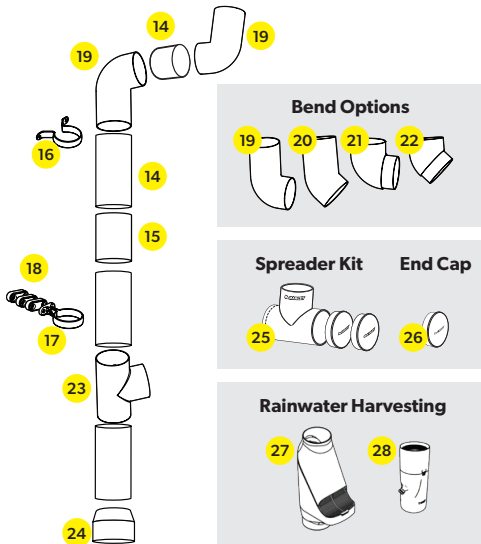


What Spouting and Downpipe do I need for my project?

Spouting



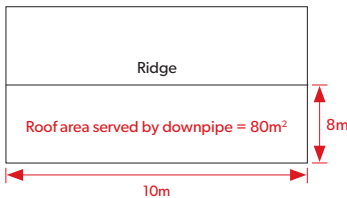
Downpipe



NOTE: Marley's Typhoon® spouting system and RP80® 80mm round downpipe systems have been used as examples in the diagrams shown on this page - shape, functionality and availability of components will vary depending on the specific spouting or downpipe system.

FIG B

Gable End Roof



Planning

Step 1 - Draw your roof with accurate measurements in the table below.



Step 2 - Establish how many downpipes are needed using roof plan table (Fig.A) below.

FIG A		
Plan area of roof served by the downpipe in m ²		
Roof Pitch	Round 65mm/ rectangular 65x50mm	Round 80mm/ rectangular 100x50mm
0°- 25°	60	85
25°-35°	50	70
35°-45°	40	60
45°-55°	35	50

Using the gable end roof example (Fig B) - for a roof area of 80m² and a roof angle of 23°, you will require either of the following downpipe options.

Option 1 - as one RP80® 80mm round/rectangular 100x50mm downpipe services a roof area of 85m², then a roof area of 80m² would require one downpipe.

Option 2 - as one RP65® 65mm round/rectangular 65x50mm downpipe services a roof area of 60m², then a roof area of 80m² would require two downpipes.

*Based on Average Rainfall Intensity of 100mm per hour.

Please circle the product and indicate the quantity you require.

Stormcloud® and Typhoon® spouting and RP80® downpipe are available in Stratus Design Series® Colours. When selecting a colour, add the corresponding colour extension to the product code.

E.g. MT1.4.GYF = Typhoon 4m length in Grey Friars®

STRATUS®
DESIGN SERIES

Scan to view the
colour range



Spouting – Please circle the product and indicate the quantity you require

Component	Classic™	FL2®	Stormcloud®	Typhoon®	Quantity Required
1 Spouting 3m length (White Only)	MC1.3	FL1.3	MS1.3	MT1.3	
1 Spouting 4m length (Colours Only)	-	-	MS1.4__	MT1.4__	
1 Spouting 5m length (White Only)	MC1.5	FL1.5	MS1.5	MT1.5	
2 External bracket	-	FL2E	-	MT2E__	
3 Internal bracket	MC2	FL2I	MS2__	MT2I__	
4 Spouting Stopend (LH)	MC3	FL3	MS3__	MT3__	
5 Spouting Stopend (RH)	MC4	FL4	MS4__	MT4__	
6 Spouting joiner	MC5	FL5	MS5__	MT5__	
7 Expansion joiner	MC17	FL17	MS17__	MT17__	
8 External corner 90°	MC6	FL6	MS6__	MT6__	
9 Internal corner 90°	MC7	FL7	MS7__	MT7__	
10 Expansion outlet 65mm	MC8.65	FL8.65	MS8.65__	-	
10 Expansion outlet 80mm	MC8.80	FL8.80	MS8.80__	MT8.80__	
11 Dropper outlet 65mm (only short runs)	MC11.65	MC11.65	MC11.65__	-	
11 Dropper outlet 80mm (only short runs)	MC11.80	MC11.80	MC11.80__	MT11.80__	
12 Outlet strainer	RWST	RWST	RWST	RWST	
13 MCS® Solvent Cement (180g tube)	MCS	MCS	MCS__	MCS__	

NOTE: Custom made spouting special angles are available upon request. Create a template, labelling where fascia is, with accurate measurements of the angle, indicating the Marley spouting profile; plus if it is an internal or external angle. Take the template into your nearest Marley stockist. Delivery will take 7-10 working days.

Downpipe – Please circle the product and indicate the quantity you require

Component	RP80® 80mm Round	RP65® 65mm Round	Rectangular 100 x 50mm	Rectangular 65 x 50mm	Quantity Required
13 MCS® Solvent Cement (180g tube)	MCS__	MCS	MCS	MCS	
14 Downpipe	RP80__ <small>(nb: Colours not socketed)</small>	RP65	MC140 <small>(not socketed)</small>	MC16 <small>(not socketed)</small>	
15 Downpipe joiner	RS80__	RS65	MC149	MC14	
16 Saddle pipe clip	RC80__	RC65	MC144	MC22	
17 Adjustable pipe clip	RC80.2__	RC65.2	MC144S	MC22S	
18 Adjustable pipe clip spacer	RC80.2S__	RC80.2S	-	-	
19 F+F bend - 95°	RB2.80__	RB2.65	MC142	MC13	
20 M+F bend - 95°	RB4.80__	-	-	-	
21 F+F bend - 43°	RB3.80__	RB3.65	MC145 (45°)	MC12 (112°)	
22 M+F bend - 43°	RB5.80__	-	-	-	
23 Junction - 95°	RJ80__	Rj65	MC148T	MC20 (112°)	
24 Adaptor - 65mm	-	-	-	MC19.65	
24 Adaptor - 80mm	RAS80 <small>(AHI 80mm) White Only</small>	RA65.80	MC141.80	MC19.80	
24 Adaptor - 90mm	RA80.90__	RA65.90	MC141.90	-	
24 Adaptor - 100mm	RA80.100__	-	-	-	
25 Spreader kit	SKIT80__	-	-	-	
26 End Cap	CS80__	-	-	-	
27 Curve® Leaf Diverter	CURVE__	-	-	-	
28 Twist® Rainwater Diverter	TWIST__	-	-	-	

MAR6302/December 2024