

Marley J-Pipe

Polyethylene sewer drainage solutions.



Introduction

Marley J-Pipe sewer drainage solution is the latest combination of material and pipeline design technology. Marley has developed NZs first complete Polyethylene sewer system, using a combination of polyethylene pipes and fittings. The J-Pipe solution is suitable for new subdivision developments as well as the traditional and renovation sewer methods. The black external layer provides high ultraviolet (UV) resistance. The body of the pipe is un-pigmented HDPE which is non-light scattering, therefore providing good reflection properties and visibility during the CCTV inspections.

Benefits of Marley J-Pipe

- Wall thickness of SDR17 in all sizes.
- High pipe ring stiffness, SN16 in all sizes.
- High tensile strength to suit all installation methods.
- Low friction external surface for ease of insertion.
- Low friction internal surface for hydraulic efficiency and low residual slime growth.
- Scratch and ultra-violet resistant external PE layer.
- Zero joint infiltration, zero root penetration.
- Complies with AS/NZS 5065/2005 (Polyethylene and polypropylene pipes and fittings for drainage and sewer applications).

Installation

Marley J-Pipe can be installed by direct burial, sliplining, pipebursting or directional drilling.

Joining

Marley J-Pipe is suitable for electrofusion (FriaFit fittings) and butt welding methods.

Product Range

PRODUCT CODE	MINIMUM OUTSIDE DIAMETER (mm)	WALL THICKNESS (mm)	SN RATING
J-PIPE			
SBW.110SDR17.12	110	6.6-7.4	SN16
SBW.160SDR17.12	160	7.4-8.3	SN16
SBW.180SDR17.12	180	9.5-10.6	SN16
SBW.225SDR17.12	225	13.4-14.9	SN16
SBW.250SDR17.12	250	14.8-16.4	SN16

PRODUCT CODE	SIZE
FRIAFIT COUPLER EF - (SDR 17-33, PE100)	
T680001	110
T680002	160
T680003	180
T680005	225
T680006	250

PRODUCT CODE	SIZE
J-PIPE JUNCTION	
PEY.160.110.W	160 x 110
PEY.160.160.W	160 x 160
PEY.180.110.W	180 x 110
PEY.250.110.W	250 x 110

Manufactured from J-Pipe, SDR17, SN16



PRODUCT CODE SIZE

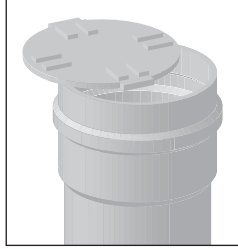
FRIAFIT SADDLE - ELECTROFUSION 90°



T615739	160 x 110
T615948	180 x 110
T682613	225 x 160
T682619	250 x 160

PRODUCT CODE SIZE

ACCESS PLUG



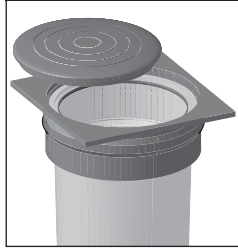
RPF.300	Female DN300
Non loading areas only.	

SWEPT BENDS



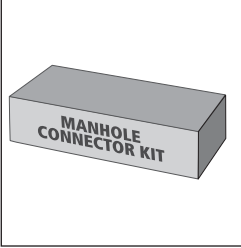
T160.11	160mm x 11deg
T160.22	160mm x 22deg
T160.45	160mm x 45deg

STEEL LID - CLASS B (8t, 80kN)



According to AS 3996	
MSL.8BS	Sealed

FRIAFIT MANHOLE CONNECTOR KIT

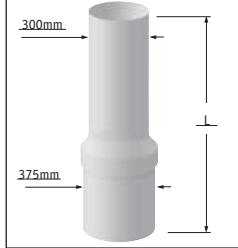


T160KIT	160
T180KIT	180
T225KIT	225
T250KIT	250

* each FriaFit Manhole Connector Kit contains;
 1 x FriaFit connector to concrete manhole
 1 x FriaFit sleeve to concrete connection
 1 x FriaFit expansion swelling ring

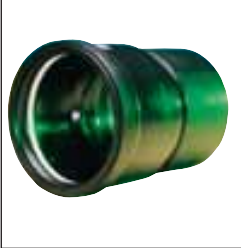
CHAMBER RISER - RIGID DN375 / 300

L



CHRR.375.1.5	1.5M
CHRR.375.2	2M
CHRR.375.3	3M

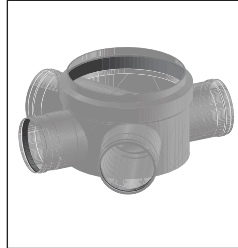
FRIAFIT EF - ADAPTOR PE/PVC



PE.PVC.110.100	110 x 100
PE.PVC.160.150	160 x 150
PE.PVC.180.150	180 x 150

* RRJ & snaplock ring
 * SDR 17

JUNCTION BASE



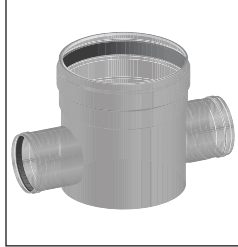
RAJ.150.375	3x150/375
--------------------	-----------

PUDDLE FLANGE



T160PF	d160
T180PF	d180
T225PF	d225
T250PF	d250

INSPECTION BASE



RSB.150.300	150/300
RSB.150.375	150/375
RSB.175.375	175/375

PRODUCT CODE	SIZE
FRIAFIT CONNECTOR TO CONCRETE MANHOLE (PE100)	
T680402	160
T680403	180
T680405	225
T680406	250

PRODUCT CODE	SIZE
FRIAFIT SLEEVE TO CONCRETE CONNECTOR (PE100)	
T680202	160
T680203	180
T680205	225
T680206	250

* Double sealing o'rings
* Expansion swelling ring

PRODUCT CODE	SIZE
FRIAFIT EXPANSION SWELLING RING	
T680262	160
T680263	180
T680265	225
T680266	250

Tools

SCRAPER TOOLS	
613305	d20-63 pipes
613300	Hand Scraper
613311	d75-225 pipes

PIPE CUTTER	
290100	50-110mm cutter
290200	110-160mm cutter
290300	180-315mm cutter
Spare Cutter Wheels	
290016	7mm wall thickness
290116	11mm wall thickness
290216	16mm wall thickness
290316	19mm wall thickness

FRIAFIT E - UNIVERSAL FUSION UNIT	
613111	Fusion Unit in Aluminium Carry Case

CLAMPING & DRILLING UNIT	
613480	Combined clamping and drilling unit for FriaFit Saddles

FRIAFIT ADAPTOR	
613235	ADFIT Adaptor for connecting onto connection socket of FriaFit Fusion Units

MANUAL ROUNDING CLAMPS	
613439	d160
613441	d180
613451	d250

DISCLAIMER
This technical brochure has been compiled by Marley New Zealand Limited ("The Company") to promote better understanding of the technical aspects of the Company's products to assist users in obtaining from them the best possible performance. The technical brochure is supplied subject to acknowledgment of the following conditions: The technical brochure is protected by Copyright and may not be copied or reproduced in any form or by any means in whole or in part without prior consent in writing by the Company. Product specifications, usage data and advisory information may change from time to time with advances in research and field experience. The Company reserves the right to make such changes at any time without notice. Correct usage of the Company's products involve engineering judgements which cannot be properly made without full knowledge of all the conditions pertaining to each specific installation. The Company expressly disclaims all and any liability to any person whether supplied with this publication or not in respect of anything and of the consequences of anything done or omitted to be done by any such person in reliance whether whole or partial upon the whole or any part of the contents of this publication. No offer to trade, nor any conditions of trading, are expressed or implied by the issue or content of this manual. Nothing herein shall override the Company's Conditions of Sale, which may be obtained from the Registered Office or any Sales Office of the Company. This technical brochure is and shall remain the property of the Company, and shall be surrendered on demand to the Company.

AUCKLAND
Mahia Road, Manurewa, Private Bag 802 Manurewa
Direct Fax 09 279 2778 Freefax 0800 652 621
Head Office: Telephone 09 279 2799 Fax 09 279 2798
Contact Centre: 0800 222 922

CHRISTCHURCH
Shands Road, Hornby, PO Box 16233 Christchurch
Contact Centre: 0800 222 922

For a quotation, installation or more information call free

For further information: **0800 MARLEY (0800 627 539) www.marley.co.nz**

an *OAliaxis* company

Utilities Solutions

MARLEY