

MARLEY STRATUS DESIGN SERIES®



WHERE STYLE
MEETS DURABILITY





INSPIRED BY COASTAL NEW ZEALAND

New Zealanders have trusted Marley spouting and downpipe systems to protect their homes from the elements for over 40 years. Marley is proud to introduce our new generation of **designer uPVC spouting and downpipe systems**. Inspired by nature the Marley Stratus Design Series® is created with style and durability in mind.

When renovating, replacing existing spouting or building a new home, the Marley Stratus Design Series® offers a premium sophisticated look while protecting your home from the elements. For an innovative and New Zealand manufactured solution insist on Marley Stratus Design Series® for style without compromise.

PERFORMANCE AND DURABILITY

With most areas of New Zealand experiencing between 600–1600mm of rainfall throughout the year you will need a strong performing spouting and downpipe system. Both Marley Typhoon® and Stormcloud® spouting systems have been designed for the efficient flow of rain water and when used in conjunction with Marley's RP80® 80mm round downpipe system can withstand prolonged heavy rainfall.

The co-extruded spouting and downpipe system with its coloured outer layer is guaranteed for 15 years and being made from uPVC, will never rust, no matter what elements your home is exposed to. At the end of their lifecycle Marley spouting and downpipe systems can be recycled by simply returning it to our Auckland site.

For guaranteed performance we recommend you install a complete Marley rainwater system including either Typhoon or Stormcloud spouting and Marley's RP80® 80mm round downpipe system.



15 YEAR GUARANTEE

Guaranteed against material and manufacturing defects for 15 years.



WILL NOT RUST

Never rusts, no matter what elements your home is exposed to.



U.V RESISTANT

Designed to stand up to New Zealand's unique UV rays and climate.



MADE IN NZ

Made in New Zealand to meet New Zealand conditions, for over 40 years.



SAFE FOR DRINKING

Complies with AS/NZS 4020: 2005, so safe for collecting drinking water.



LOW MAINTENANCE

Wash with warm soapy water and a soft brush, then simply rinse with clean water.



RECYCLABLE

Used spouting and downpipes can be returned to Marley for recycling.

SUSTAINABLE MANUFACTURING

Marley is committed to creating environmentally sustainable processes and products and was the first plastics manufacturer in New Zealand to achieve ISO14001 registration. We are also Best Environmental Practice (BEP) certified for our entire range of manufactured uPVC systems, so are recognised under the New Zealand Green Building Council's Greenstar rating system.

BEP accreditation requires that we get our raw materials from sustainable and responsible sources, continuously work on our manufacturing processes to reduce our environmental footprint, and accept offcuts and used products back at the end of their life for recycling.

Marley has also joined Meridian Energy's Certified Renewable Energy programme with the goal of only sourcing electricity from 100% renewable sources by 2025.



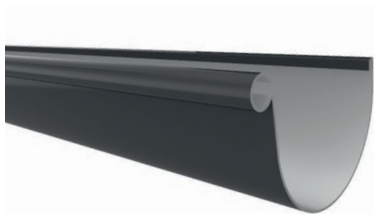
BEST ENVIRONMENTAL PRACTICE



AS/NZS 5395:2024
LICENSE No 2969



TYPHOON® SPOUTING



Half round shape

Marley Typhoon spouting is designed with a high front to conceal untidy rooflines and its curved profile ensures the efficient flow of rainwater. The half round profile will complement any style of home from classic villa or beach house, to the modern home.

BRACKET OPTIONS

Create a seamless finish with the smooth lines of the internal bracket system, or for a striking design statement and ease of cleaning, choose the external bracket system.

Internal Brackets



Grey Friars®

External Brackets



Ironsand®



Typhoon® Black, Internal Brackets

COLOUR OPTIONS



Black



Grey Friars®



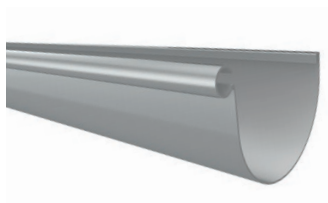
Ironsand®



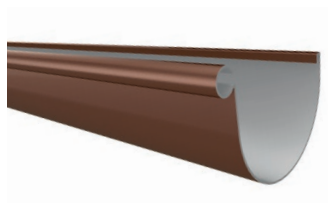
Gull Grey



FlaxBlack®



Titanium



Copper

FlaxBlack® is a colour match for NZ Steel's COLORSTEEL® FlaxPod®. Marley NZ Ltd is not affiliated with NZ Steel Ltd. Note gloss levels may vary between building materials. Actual colours may vary slightly from those shown. For a more accurate colour comparison, please request a product sample.

Looking for
inspiration?
SCAN HERE

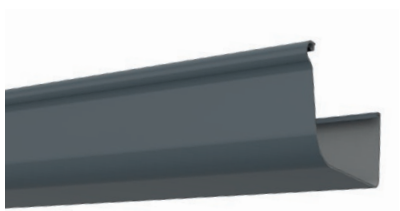


Typhoon® Black, Internal Brackets





STORMCLOUD® SPOUTING



Quarter round shape

NZ's favourite uPVC spouting, Stormcloud's quarter round shape frames your house with clean, strong lines, whilst enjoying all the low maintenance and long life benefits of uPVC.

BRACKET OPTIONS

Create a seamless finish with the smooth lines of the internal bracket system.

Internal Brackets



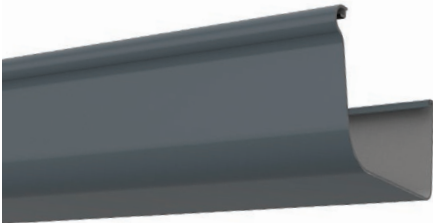


Stormcloud® Black

COLOUR OPTIONS



Black



Grey Friars®



Ironsand®



Gull Grey



FlaxBlack®

FlaxBlack® is a colour match for NZ Steel's COLORSTEEL® FlaxPod®. Marley NZ Ltd is not affiliated with NZ Steel Ltd. Note gloss levels may vary between building materials. Actual colours may vary slightly from those shown. For a more accurate colour comparison, please request a product sample.

Looking for
inspiration?
SCAN HERE



Stormcloud® Grey Friars®

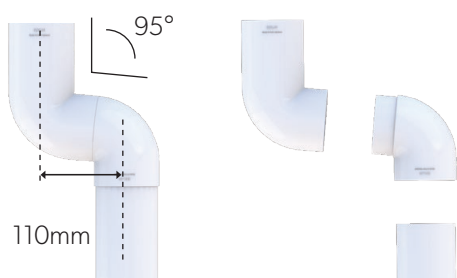


RP80[®] DOWNPIPE

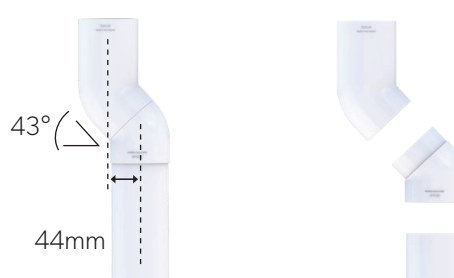
New Zealand's number one selling downpipe is a key component of the Marley Stratus Design Series[®] system. Match the colour to your spouting or make a bold design statement. Marley downpipes are strong and low maintenance and come with a full range of streamlined colour matched fittings, including multiple bend options to suit any install.

BEND COMBINATIONS FOR NARROW SOFFITS

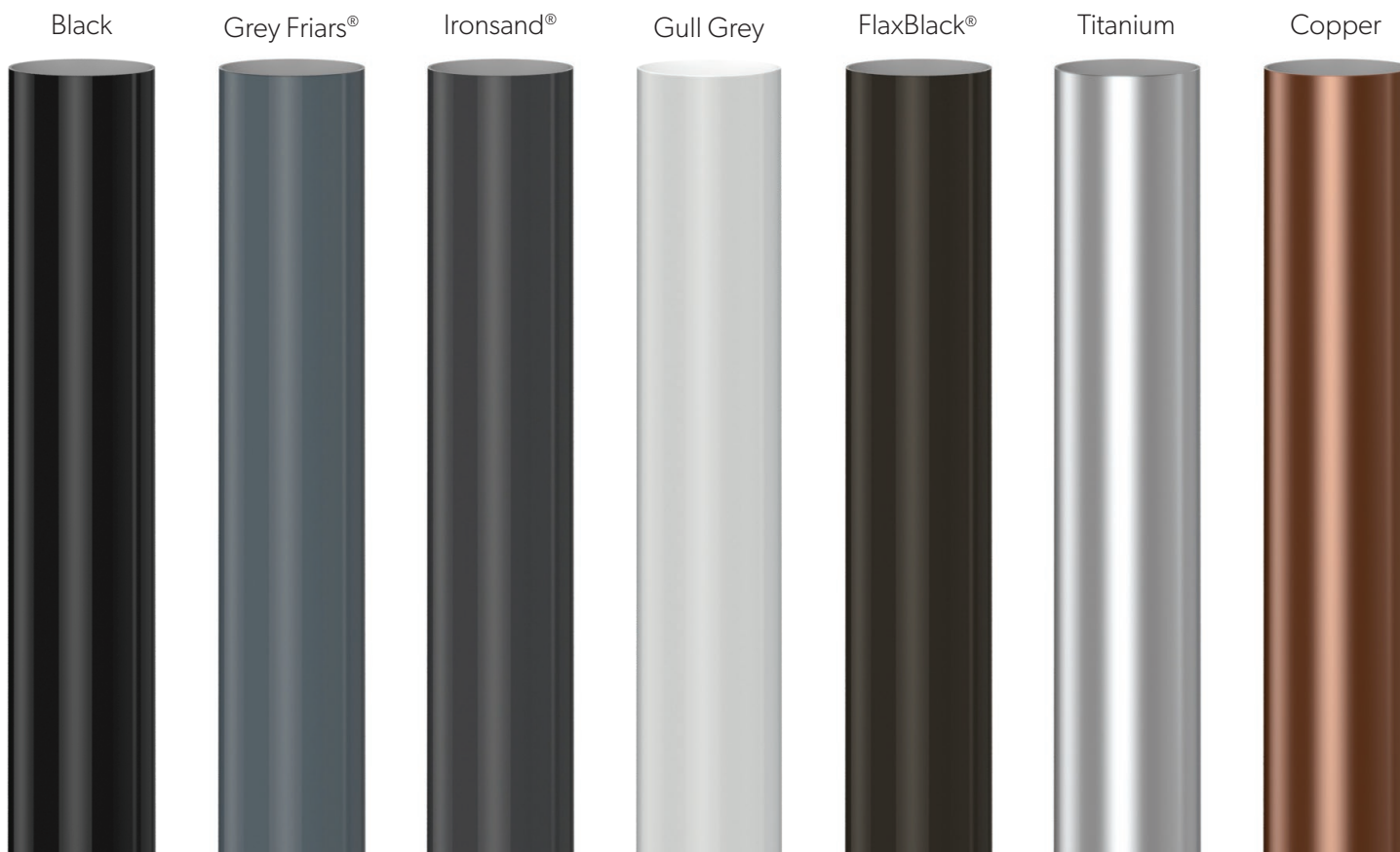
RB2.80 + RB4.80



RB3.80 + RB5.80



COLOUR OPTIONS



FlaxBlack[®] is a colour match for NZ Steel's COLORSTEEL[®] FlaxPod[®]. Marley NZ Ltd is not affiliated with NZ Steel Ltd. Note gloss levels may vary between building materials. Actual colours may vary slightly from those shown. For a more accurate colour comparison, please request a product sample.



by **alixis**

RP80® Black



Looking for
inspiration?
SCAN HERE



STRATUS®
DESIGN SERIES

SUSTAINABILITY WITH STYLE

Marley's rain harvesting range combines innovative product features with sleek sophisticated designs that blend seamlessly into your downpipe system. Products are easy to install and maintain and require no glue or solvents.

CURVE®

TWIST®



The Marley Curve® is a leaf diverter that combines sleek, sophisticated design with innovative filtering technology to cleanse water of debris. Its unique screen design draws rainwater in while blocking leaf matter and other debris.

- › Filters leaves and debris for cleaner water
- › Improves tank water quality
- › Reduces load on drains and stormwater systems
- › Quick release upper body for easy maintenance
- › Streamlined design with shelf-shedding screen

The Marley Twist® is a compact rainwater diverter that turns your downpipe into a free source of water. Designed for single downpipe use, Twist has an on-off function that allows water to be diverted as and when needed.

- › Connect to a small tank to collect free rainwater from your downpipe
- › Great source of water for the garden, general cleaning or for emergency supply
- › Positive impact on the environment through reduced mains water usage
- › Twist® top to divert water flow as required

URBAN RAIN HARVESTING MADE EASY

Marley's Tank-It® urban tank, coupled with a Marley Twist® downpipe diverter, offer a simple rain harvesting solution for capturing free rainwater from your roof.

TANK-IT®

Designed to store rainwater in urban environments where space is limited and aesthetics are important, Tank-It® won't look out of place next to your garden or courtyard.

Tank-It® is easily connected to a downpipe using a water diverter like the Marley Twist®. It has a choice of an upper or lower tap position and two hose inlet positions either side. Depending on the installation options you choose it can store up to 316 litres of rainwater.

Use this free water source for gardening, topping up pools or ponds, or for general outdoor cleaning. It is also ideal for storing a backup supply should adverse natural or accidental events affect the reliability of the mains water supply.

Tank-It® measures 1120mm high by 805mm wide x 575mm deep and its square shape means it can sit out of the way up against a wall or house. A vented screw top lid keeps the water secure and fresh.





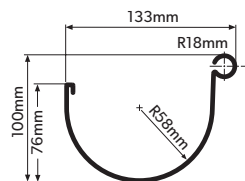
Typhoon® Grey Friars®, alternating External & Internal Brackets



SPOUTING SYSTEM COMPONENTS

TYPHOON® SPOUTING SYSTEM

Cross-sectional area 6100 mm²



When selecting a colour add the corresponding colour extension to the product code.

E.g. MT1.4.**GYF** = Typhoon 4m length in Grey Friars®

COLOUR CODE EXTENSION

BLACK **.BLK**

GREY FRIARS® **.GYF**
(Pictured)

IRONSAND® **.IRO**

GULL GREY **.GGY**

FLAXBLACK® **.FXB**

TITANIUM **.TTN**

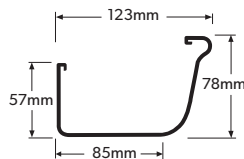
COPPER **.COP**

Component	Product	Product Code
Typhoon® Spouting 4m Length		MT1.4.__
Internal Bracket		MT2I.__
External Bracket		MT2E.__
Expansion Outlet 80mm		MT8.80.__
Dropper Outlet 80mm		MT11.80.__
Joiner		MT5.__
Expansion Joiner		MT17.__
External Angle 90°		MT6.__
Internal Angle 90°		MT7.__
Left Hand Stopend		MT3.__
Right Hand Stopend		MT4.__
Special Spouting Angle - Flat*		MTSPEC.F.__
Special Spouting Angle - Rake*		MTSPEC.R.__
Solvent Welding Cement - 180g Tube		MCS.__

*Custom made to order

STORMCLOUD® SPOUTING SYSTEM

Cross-sectional area 5100 mm²



When selecting a colour add the corresponding colour extension to the product code.

E.g. MS1.4.**IRO** = Stormcloud 4m length in Ironsand®

COLOUR CODE EXTENSION

BLACK **.BLK**

GREY FRIARS® **.GYF**

IRONSAND® **.IRO**
(Pictured)

GULL GREY **.GGY**

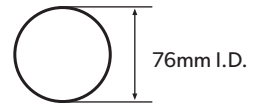
FLAXBLACK® **.FXB**

Component	Product	Product Code
Stormcloud® Spouting 4m Length		MS1.4.__
Stormcloud® Bracket		MS2.__
Expansion Outlet 80mm		MS8.80.__
Expansion Outlet 65mm		MS8.65.__
Dropper Outlet 80mm NB: also use for metal spouting		MC11.80.__
Joiner		MS5.__
Expansion Joiner		MS17.__
External Angle 90°		MS6.__
Internal Angle 90°		MS7.__
Left Hand Stopend		MS3.__
Right Hand Stopend		MS4.__
Special Spouting Angle - Flat*		MSSPEC.F.__
Special Spouting Angle - Rake*		MSSPEC.R.__
Solvent Welding Cement - 180g Tube		MCS.__

*Custom made to order

RP80® DOWNPIPE SYSTEM

FOR MARLEY uPVC OR METAL SPOUTING SYSTEMS



When selecting a colour add the corresponding colour extension to the product code.

E.g. RP80.**FXB** = RP80 3m length in FlaxBlack®

COLOUR CODE EXTENSION

BLACK **.BLK**

GREY FRIARS® **.GYF**

IRONSAND® **.IRO**

GULL GREY **.GGY**

FLAXBLACK® **.FXB**
(Pictured)

TITANIUM **.TTN**

COPPER **.COP**

Component	Product	Product Code
Round Downpipe 80mm 3m Length NB: Nonsocketed – use jointing socket RS80.TTN		RP80.__
95° F+F Bend 80mm		RB2.80.__
95° M+F Bend 80mm		RB4.80.__
43° F+F Bend 80mm		RB3.80.__
43° M+F Bend 80mm		RB5.80.__
Jointing Socket 80mm		RS80.__
95° Junction 80mm		RJ80.__
Pipe Clip-Saddle 80mm		RC80.__
Pipe Clip Adjustable 80mm Ideal for weatherboards		RC80.2.__
Pipe Clip Adjustable Spacer 80mm For stepped cladding systems		RC80.2S.__
Adaptor 80 to 90mm		RA80.90.__
Adaptor 80 to 100mm		RA80.100.__
Downpipe Spreader Kit 80mm		SKIT80.__
End Cap 80mm		CS80.__
Dropper Outlet Also for connecting RP80® to metal spouting		MC11.80.__
Curve® Leaf Diverter Protect water tanks		CURVE.__
Twist® Water Diverter For extra water supply		TWIST.__
Solvent Welding Cement - 180g Tube		MCS.__



Sustainable Manufacturing

Marley is committed to creating environmentally sustainable processes and products and was the first plastics manufacturer in New Zealand to achieve ISO14001 registration. We are also Best Environmental Practice certified for our entire range of manufactured uPVC systems. This means we get our raw materials from sustainable and responsible sources, continuously work on our manufacturing processes to reduce our environmental footprint and accept our products back at the end of their useful life for recycling.

BEST ENVIRONMENTAL PRACTICE



AS/NZS 5385:2024
LICENSE No 2969



Disclaimer

This sales brochure has been compiled by Marley New Zealand Limited ("The Company") and is supplied subject to acknowledgment of the following conditions:

The sales brochure is protected by Copyright and may not be copied or reproduced in any form or by any means in whole or in part without prior consent in writing by the Company. Prices are subject to change, product specifications, usage data and advisory information may also change from time to time with advances in research and field experience. The Company reserves the right to make such changes to price or product information at any time without notice. Correct usage of the Company's products involve engineering judgements which cannot be properly made without full knowledge of all the conditions pertaining to each specific installation. The Company expressly disclaims all and any liability to any person whether supplied with this publication or not in respect of anything and of the consequences of anything done or omitted to be done by any such person in reliance whether whole or partial upon the whole or any part of the contents of this publication. No offer to trade, nor any conditions of trading, are expressed or implied by the issue or content of this manual. Nothing herein shall override the Company's Conditions of Sale, which may be obtained from the Registered Office or any Sales Office of the Company. This price book is and shall remain the property of the Company, and shall be surrendered on demand to the Company.

Our Partners



For more information: 0800 MARLEY (0800 627539) | www.marley.co.nz