

dBLUE ACOUSTIC PLUMBING SYSTEM

SANITARY AND DRAINAGE

Dimension Tables



Dimensions

The dimensions of the pipe and fittings in the product tables are all in mm unless stated differently. The standard wall thickness of the fittings is not included in the tables, but can be found in the table below.

Diameter d_1	Wall thickness e
50	1,8
75	2,3
110	3,4
160	4,9

Table 1

Abbreviations

Abbreviation	
DN_1	Nominal dimension
d_n/d_1	External dimension fitting/pipe
Z_1	Length until insertion point
α°	Angle of fitting
L	Total length fitting
l_1	Partial length of fitting

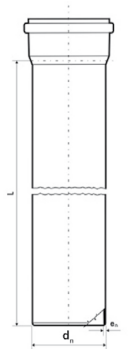
Table 2

Pipe with socket

PP-MD



d_n	L	dBlue® code	e
50	150	PA.100.50.0.15	1,8
50	1000	PA.100.50.1.0	1,8
50	3000	PA.100.50.3.0	1,8
75	1000	PA.100.75.1.0	2,3
75	3000	PA.100.75.3.0	2,3
110	150	PA.100.110.0.15	3,4
110	1000	PA.100.110.1.0	3,4
110	3000	PA.100.110.3.0	3,4
160	1000	PA.100.160.1.0	4,9
160	3000	PA.100.160.3.0	4,9

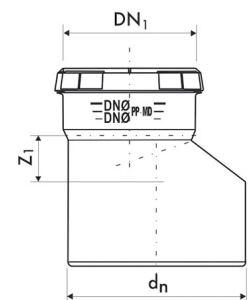


Reducer

PP-MD



d_n/DN_1	dBlue® code	Z_1
75/50	PA.123.75.50	25
110/50	PA.123.110.50	25
110/75	PA.123.110.75	25



Elbow

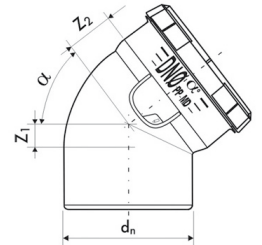
PP-MD

15°, 30°, 45°, 67,5°, 87,5°



* swept bend

α°	d_n	dBlue® code	Z_1	Z_2
15	50	PA.101.50.15	4	13
15	75	PA.101.75.15	12	16
15	110	PA.101.110.15	14	18
30	50	PA.101.50.30	8	12
30	75	PA.101.75.30	14	15
30	110	PA.101.110.30	20	22
45	50	PA.101.50.45	12	20
45	75	PA.101.75.45	20	28
45	110	PA.101.110.45	25	35
45	160	PA.101.160.45	38	60
87,5	50	PA.101.50.88	33	35
87,5	75	PA.101.75.88	41	49
87,5	110	PA.101.110.88	61	75
87,5	160	PA.101.160.88	99	98



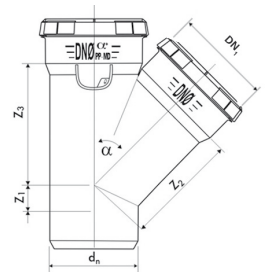
Branch

PP-MD

45°, 67°, 87,5°



α°	d_r/DN_1	dBlue® code	Z_1	Z_2	Z_3
45	50/50	PA.104.50.45	17	67	67
45	75/50	PA.104.75.50.45	1	83	81
45	75/75	PA.104.75.45	23	96	97
45	110/50	PA.104.110.50.45	13	108	100
45	110/110	PA.104.110.45	29	140	140
87,5	50/50	PA.104.50.88	33	34	35
87,5	75/75	PA.104.75.88	47	50	50
87,5	110/110	PA.104.110.88	62	70	70



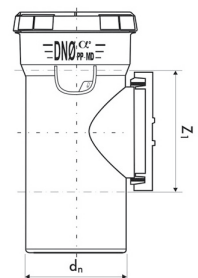
Clean out branch

PP-MD

90°



d_n	dBlue® code	Z_1
110	PA.129.110	131

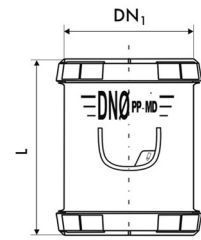


Sleeve socket / Slip coupler

PP-MD



DN ₁	dBlue® code	L
50	PA.110.50	97
75	PA.110.75	104
110	PA.110.110	116
160	PA.110.160	140

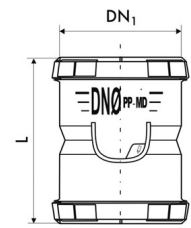


Double socket / Stop coupler

PP-MD



DN ₁	dBlue® code	L
50	PA.121.50	100
75	PA.121.75	104
110	PA.121.110	116
160	PA.121.160	140

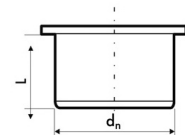


Socket plug

PP-MD



d _n	dBlue® code	L
50	PA.137.50	32
75	PA.137.75	33
110	PA.137.110	37

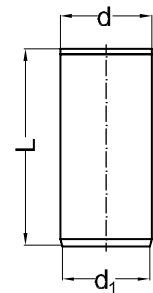


Trap connection socket

PP-MD



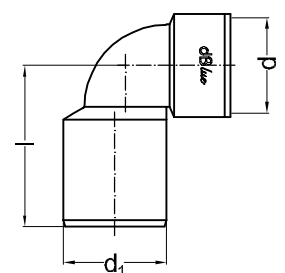
d1/d	dBlue® code	L
50/40	PA.110.50.Trap	100



Trap connection bend



d ₁ /d	dBlue® code	l
50 x 40	PA.101.50.88.Trap	80



Transition from PVC to dBlue®

PVC



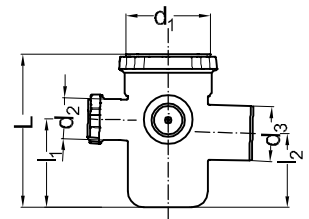
d_1/d_2	dBlue® code	L
43/50	PA.50.40.400	400
56/50	PA.50.50.200	200
69/75	PA.75.65.200	200

Floor waste gully

PP-MD



$d_1/d_2/d_3$	dBlue® code	L	L_1	L_2
110/50/75	PA.159.110.75	210	121	101



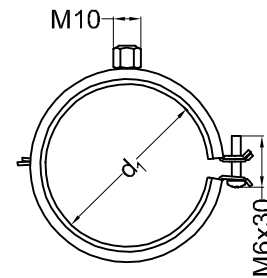
Acoustic bracket

Metal with rubber inlay



DN ₁	dBlue® code
50	PA.140.50M
75	PA.140.75M
110	PA.140.110M

dBlue® uses a single bracket type. The bracket is used as a guide bracket when installed with the 2 supplied spacers and as an anchor point bracket without spacers.



dBlue® lubrication



	dBlue® code
250 ml	DBJL250

Sustainable Manufacturing

Marley is committed to creating environmentally sustainable processes and products and was the first plastics manufacturer in New Zealand to achieve ISO14001 registration. We are also Best Environmental Practice certified for our entire range of manufactured uPVC systems. This means we get our raw materials from sustainable and responsible sources, continuously work on our manufacturing processes to reduce our environmental footprint and accept our products back at the end of their useful life for recycling.



 FOLLOW US @MARLEYNEWZEALAND

DISCLAIMER

This technical catalogue has been compiled by Marley New Zealand Limited ("The Company") to promote better understanding of the technical aspects of the Company's products to assist users in obtaining from them the best possible performance. The technical catalogue is supplied subject to acknowledgment of the following conditions:

The technical catalogue is protected by Copyright and may not be copied or reproduced in any form or by any means in whole or in part without prior consent in writing by the Company. Product specifications, usage data and advisory information may change from time to time with advances in research and field experience. The Company reserves the right to make such changes at any time without notice. Correct usage of the Company's products involve engineering judgements which cannot be properly made without full knowledge of all the conditions pertaining to each specific installation. The Company expressly disclaims all and any liability to any person whether supplied with this publication or not in respect of anything and of the consequences of anything done or omitted to be done by any such person in reliance whether whole or partial upon the whole or any part of the contents of this publication. No offer to trade, nor any conditions of trading, are expressed or implied by the issue or content of this manual. Nothing herein shall override the Company's Conditions of Sale, which may be obtained from the Registered Office or any Sales Office of the Company. This technical catalogue is and shall remain the property of the Company, and shall be surrendered on demand to the Company. Actual colours may vary slightly from those shown. For a more accurate colour comparison, please request a product sample.

MAR4181 June 2020

OUR PARTNERS



For more information: **0800 MARLEY (0800 627539)** | www.marley.co.nz

 **MARLEY**
by **alixis**