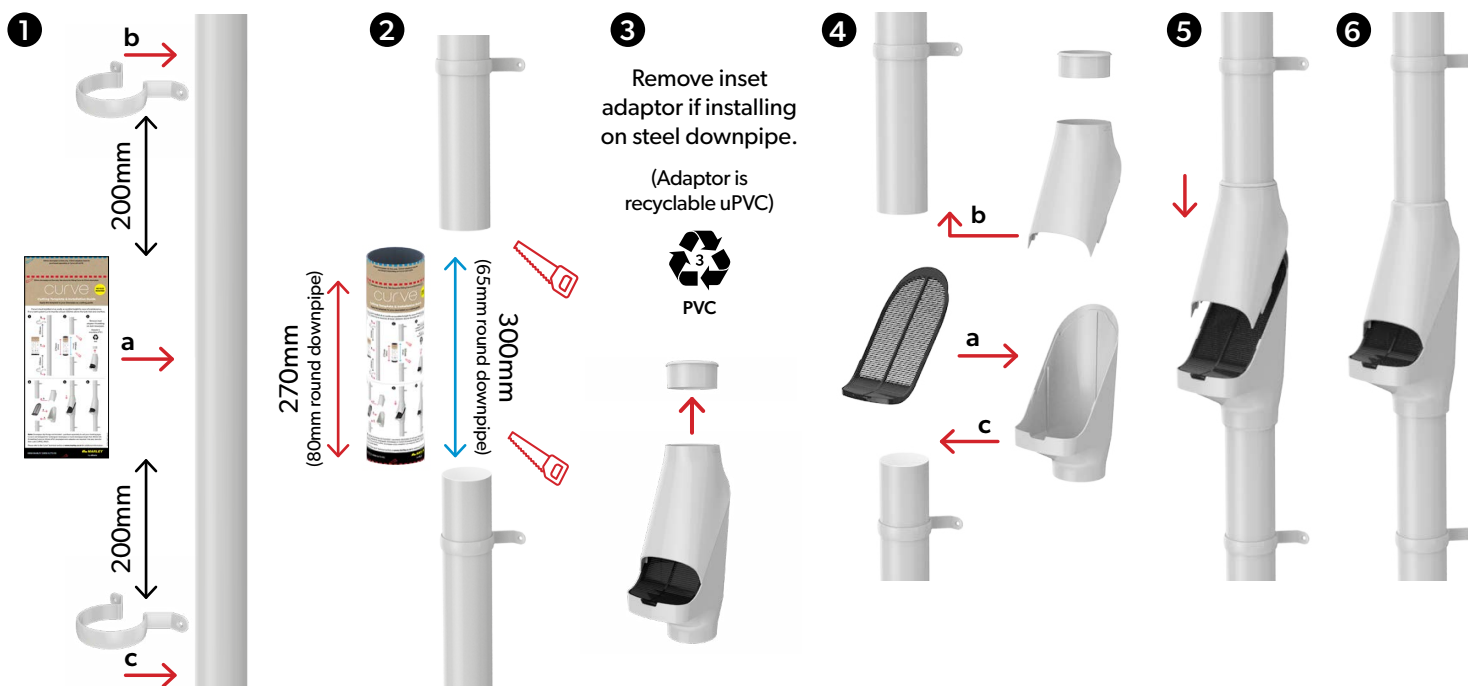


**NO GLUE
REQUIRED**

curve®

Installation Guide

Curve is best installed at an easily accessible height for ease of maintenance.
If on a tank system Curve must be at least 300mm above the tank inlet and overflow.



Metal Downpipes: Curve is now available to be fitted to 80mm metal downpipe systems by removing the top inset adaptor, (3).

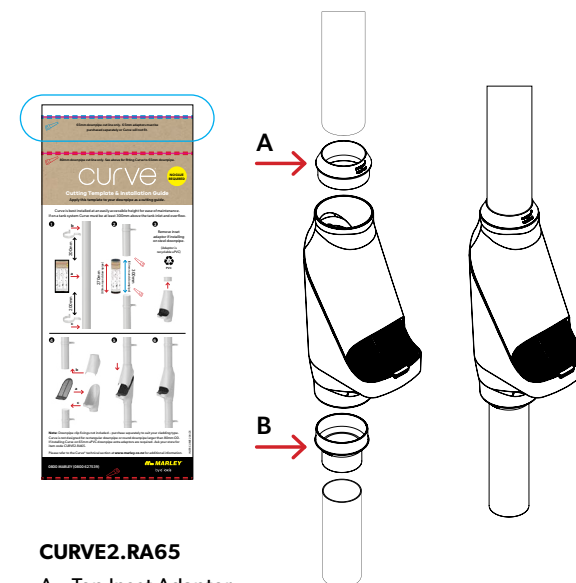
Care must be taken to ensure that the metal downpipe is in good condition, damaged or out of round metal downpipe will allow water to bubble up from the top of the Curve.

The Curve base has been designed to accept both uPVC and metal downpipe without the need for inset adaptors.

Note: Downpipe clip fixings not included – purchase separately to suit your cladding type. Curve is not designed for rectangular downpipe or round downpipe larger than 80mm OD.

If installing Curve on 65mm uPVC downpipe extra adaptors are required (Item code CURVE2.RA65)

Installation onto 65mm uPVC Downpipe Use 65mm Adaptor Kit available separately



CURVE2.RA65

A – Top Inset Adaptor

B – Bottom Inset Adaptor

Notes: The CURVE2.RA65 Adaptor set is supplied with 2 x RC65 Clips for use on RP65 Downpipe.

The CURVE2.RA65 Adaptor set cannot be used with the original Curve design.

When installing the Curve onto RP65 uPVC downpipe the adaptor set CURVE2.RA65 is required, use the blue dotted line on the template when cutting into the downpipe.

Remove the top inset adaptor from the Curve and replace with the top inset adaptor from the RA65 Adaptor set.

Fit the bottom inset adaptor onto the downpipe and assemble the Curve body as per steps 4, 5 and 6.